

C:\USERS\rita\onedrive\desktop\dynamic\coffee rush\pine island\CAD\PL MECHANICALSET.DWG \ September 3, 2025

| HVAC NOTES | |
|---|--|
| <div>1. ALL WORK TO BE DONE IN ACCORDANCE WITH THESE PLANS, 2023 FLORIDA BUILDING CODE MECHANICAL & NATIONAL CODES.</div> <div>2. THESE DRAWINGS ARE SCHEMATIC IN NATURE AND ARE NOT INTENDED TO SHOW EVERY MINOR DETAIL. THE CONTRACTOR SHALL FURNISH AND INSTALL ALL ITEMS REQUIRED FOR A COMPLETE ACCEPTABLE WORKING INSTALLATION.</div> <div>3. ALL WORK SHALL BE PERFORMED BY A LICENSED CONTRACTOR AS REGISTERED OR CERTIFIED IN THE STATE OF FLORIDA.</div> <div>4. THE CONTRACTOR SHALL PAY FOR ALL PERMITS, FEES, INSPECTIONS, AND TESTS.</div> <div>5. THE CONTRACTOR SHALL VISIT THE JOB SITE AND FAMILIARIZE HIMSELF WITH ALL EXISTING CONDITIONS.</div> <div>6. ALL WORK SHALL BE COORDINATED WITH OTHER TRADES TO AVOID INTERFERENCE WITH THE PROGRESS OF CONSTRUCTION.</div> <div>7. AIR DISTRIBUTION DEVICES TO BE AS SCHEDULED, REFER TO PLANS FOR AIR PATTERN DIRECTIONS AND PROVIDE PATTERN CONTROLLERS AS REQUIRED.</div> <div>8. THERMOSTATS TO BE MOUNTED 48" ABOVE FINISHED FLOOR.</div> <div>9. CONTRACTOR SHALL ADJUST, TEST, AND BALANCE ALL SYSTEMS AND DEVICES TO WITHIN 10% OF THE VALUES SHOWN ON THE PLANS. TEST AND BALANCE SHALL BE PERFORMED WITH ALL SYSTEMS OPERATING SIMULTANEOUSLY IN THE "OCCUPIED" MODE. PROVIDE THE OWNER WITH A DETAILED REPORT OF THE ACTUAL VALUES OBTAINED AFTER BALANCING AND INCLUDE ENTERING AND LEAVING AIR TEMPERATURE AND TOTAL CFM AT EACH COIL, AND THERMOSTAT DISPLAY TEMPERATURE VS. ACTUAL TEMPERATURE AS MEASURED BY A CALIBRATED THERMOMETER.</div> <div>10. THE CONTRACTOR SHALL GUARANTEE ALL MATERIALS AND WORKMANSHIP FREE FROM DEFECTS FOR A PERIOD OF NOT LESS THAN 1 YEAR FROM THE DATE OF ACCEPTANCE, UNLESS OTHERWISE NOTED.</div> <div>11. ALL EQUIPMENT, THERMOSTATS, SENSORS AND CONTROL PANELS SHALL BE CLEARLY AND PERMANENTLY MARKED WITH THE SYSTEM NUMBER IT SERVES. EQUIPMENT TAGS SHALL BE ENGRAVED OR EMBOSSED AND SECURED BY RIVETS OR SCREWS NEAR THE MANUFACTURES NAME PLATE.</div> <div>12. PROVIDE THE OWNER WITH A BINDER CONTAINING THE OPERATING, INSTALLATION AND MAINTENANCE MANUALS FOR ALL MECHANICAL EQUIPMENT. PROVIDE DETAILED WIRING DIAGRAMS FOR ALL EQUIPMENT AND CONTROL SYSTEMS, A WEEKLY SCHEDULE OF "OCCUPIED/UNOCCUPIED" HOURS AND A COPY OF THE TEST AND BALANCE REPORT PER NOTE #12.</div> | |

| NATURAL VENTILATION CALCULATION | | | | | |
|---------------------------------|-----------------|---|----------------------|----------------------------------|---------------------------------|
| OCCUPANCY CATEGORY | FLOOR AREA (SF) | NUMBER AND SIZE OF OPERABLE WINDOWS (F) | OPERABLE WINDOW (SF) | SF OF OPERABLE WINDOW/SF OF ROOM | >4% |
| COFFEE RUSH | 367 | (3) 3X5 | 45 | 0.12 | TOTAL SF OF OPERABLE WINDOW 12% |

| OUTDOOR MINI SPLIT CONDENSING UNIT | |
|------------------------------------|--------------------|
| MARK | CU-1 |
| MANUFACTURER | mitsubishi |
| MODEL NO. | MUZ-WX24NL |
| COOLING CAPACITY | 22,400 BTUH |
| HEATING CAPACITY | 26,000 BTUH |
| ELECTRIC SERVICE | 208V/230V-1PH-60HZ |
| MCA | 16 |
| MOCP | 29 |

| WALL MOUNTED MINI SPLIT | |
|-------------------------|---------------------|
| MARK | MS-1 |
| MANUFACTURER | mitsubishi |
| MODEL NO. | MSZ-WX24NL |
| TOTAL AIR FLOW (CFM) | 800 |
| OUTSIDE AIR (CFM) | NATURAL VENTILATION |
| COOLING CAPACITY | 22,400 BTUH |
| HEATING CAPACITY | 26,000 BTUH |
| ELECTRIC SERVICE | 208/230V-1PH-60HZ |
| MCA | 1 |
| MOP | - |


| EXHAUST FAN SCHEDULE | | |
|----------------------|--------------|--------------|
| MARK | EF-1 | EF-2 |
| MANUFACTURER | GREENHECK | GREENHECK |
| MODEL NO. | SP-A50-90-VG | SP-A50-90-VG |
| CFM | 50 CFM | 75 CFM |
| S.P. (IN W.G.) | 0.125 | 0.125 |
| RPM | 808 | 838 |
| WATTS | 3.7W | 4.8W |
| ELECTRIC SERVICE | 115/1/60 | 115/1/60 |
| ACCESSORIES | ROOF CAP | ROOF CAP |

| | |
|-----|-----------|
| No: | REVISIONS |
| | - |
| | - |
| | - |
| | - |
| | - |

CONSTRUCTION DOCUMENTS FOR

COFFEE RUSH

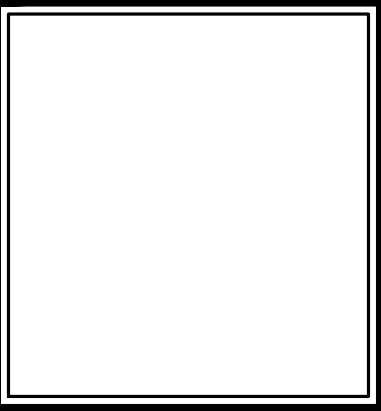
1189 SW PINE ISLAND ROAD
CAPE CORAL, FL 33991



ARCHITECTURE

MK Architecture LLC

8200 College Parkway, Suite 101
Fort Myers, Florida 33919
239.482.2121
AR10564 ID6790
www.MK-ARCH.com



| | |
|-----------|------------|
| JOB: | MK250158 |
| DATE: | 08-05-2025 |
| DRWN. BY: | |
| CAD REF: | |

SHEET




M1

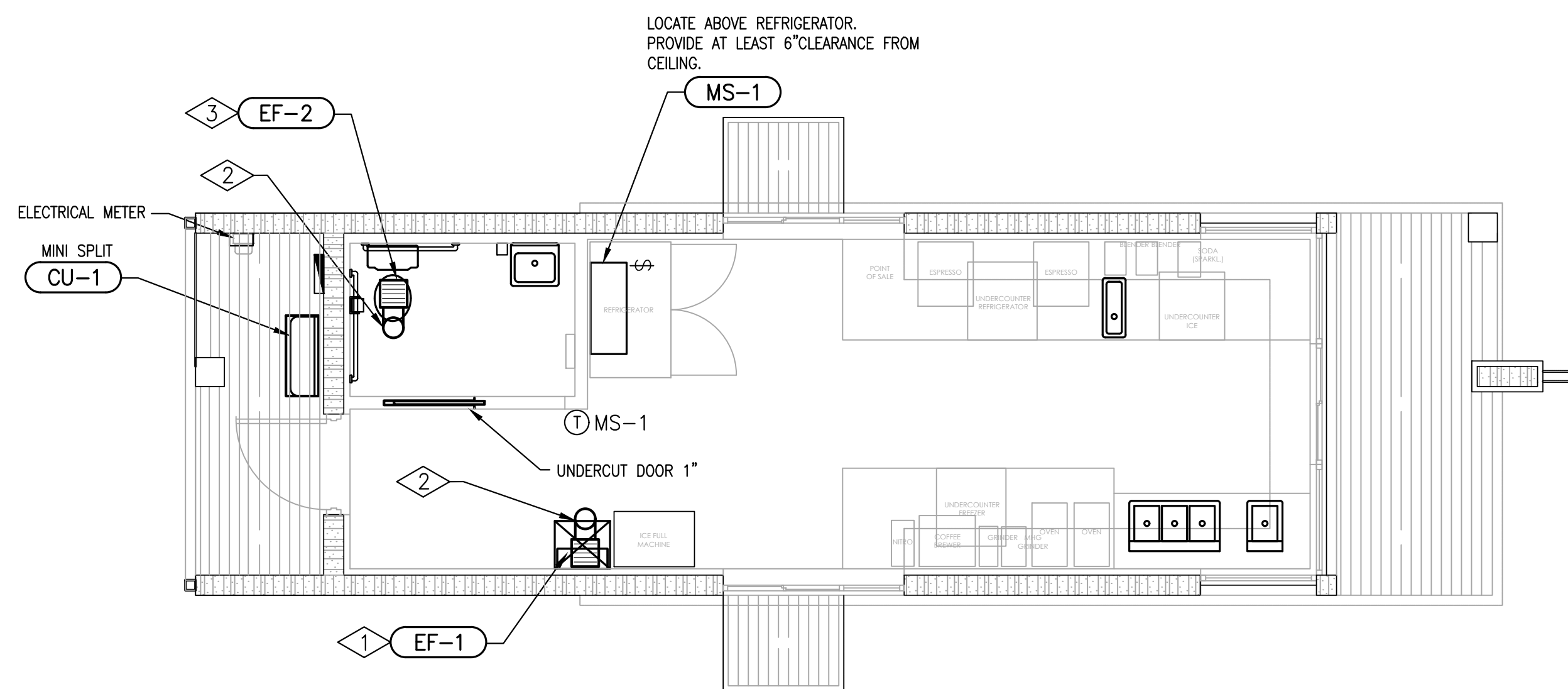
MK Architecture, LLC hereby reserves its common law copyright and other property rights in these plans, designs, arrangements and ideas. These ideas, plans and designs are not to be reproduced, changed or copied in any form or manner whatsoever, nor are they to be assigned to any third party, without first obtaining the express written permission from MK Architecture, LLC. Contractors shall verify and be responsible for all dimensions and conditions of the job. MK Architecture, LLC shall be notified in writing of any variations or discrepancies from the dimensions, conditions and specifications shown on these drawings. All construction shall be in accordance with the current Florida Building Code.

- ① EXHAUST FAN WITH HORIZONTAL DISCHARGE.
- ② CEILING.
- ③ EXHAUST DUCT. REFER TO PLAN(S) FOR SIZE AND CONFIGURATION.
- ④ FLEXIBLE CONNECTION.
- ⑤ FAN OPENING FOR DUCT CONNECTION, WITH INTEGRAL BACKDRAFT DAMPER.
- ⑥ GRILLE (FURNISHED WITH FAN).
- ⑦ VIBRATION ISOLATION HANGER.
- ⑧ SUPPORT ANGLE AND HANGING RODS. HANGING RODS SHALL BE SIZED BY THE CONTRACTOR AND SUFFICIENT TO SUPPORT LOAD.

CEILING EXHAUST FAN DETAIL
N.T.S.

HVAC LEGEND

-  CEILING MOUNTED EXHAUST FAN
 EQUIPMENT MARK
 THERMOSTAT



KEY NOTES

- ① EF-1 CEILING EXHAUST FAN.
INSTALL PER MANUFACTURER'S REQUIREMENTS
COORDINATE WITH ALL OTHER TRADES.
- ② EXTEND 6"Ø EXHAUST AIR DUCT UP
THRU ROOF. PROVIDE WEATHER CAP.
ROUTE IN THE CEILING SPACE TO PROVIDE 10'-0"
SEPARATION FROM OUTSIDE AIR INTAKE.
- ③ EF-2 CEILING EXHAUST FAN.
SWITCH WITH LIGHTS. INSTALL PER MANUFACTURER'S
REQUIREMENTS. COORDINATE WITH ALL OTHER TRADES.

MECHANICAL PLAN

SCALE: $1/4'' = 1' - 0''$

| No.: | REVISIONS |
|------|-----------|
| 1 | - |
| 2 | - |
| 3 | - |
| 4 | - |
| 5 | - |

CONSTRUCTION DOCUMENTS FOR

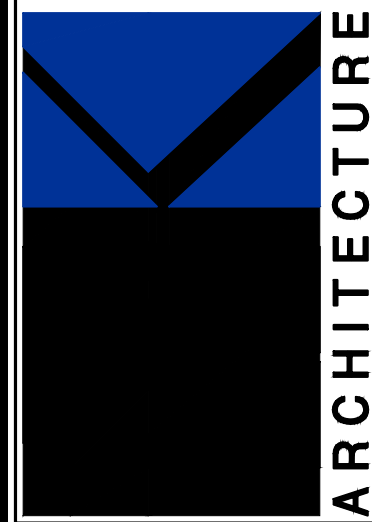
COFFEE RUSH

1189 SW PINE ISLAND ROAD
CAPE CORAL, FL 33991

MK Architecture LLC

8200 College Parkway, Suite 101
Fort Myers, Florida 33919

239.482.2121
AR10564 ID6790
www.MK-ARCH.com



| | |
|-----------|------------|
| JOB: | MK25015B |
| DATE: | 08-05-2025 |
| DRWN. BY: | |
| CAD REF: | |

SHEET
M2